

Certificate of Analysis

Company: Vermont Kind

Sample ID: VTKM-C0024

2687 Willoughby Lake RD

Lot: N/A

Barton, VT 05822

Matrix: Oil

Report Date: 2/6/2023

Date Analyzed: 2/3/2023

Customer ID: 210614-01

Date Sampled: 1/24/2023

Analyst: 050

Grower License #: S000001559

Date Received: 1/27/2023

Report ID: C230127AZ

Cannabinoid Summary

Cannabinoid Profile	LOQ (mg/g)	Concentration (mg/g)	Weight (%)
CBDVA	0.0005	<LOQ	<LOQ
CBDV	0.0012	<LOQ	<LOQ
CBDA	0.0008	<LOQ	<LOQ
CBGA	0.0008	11.26	1.13
CBG	0.0019	47.13	4.71
CBD	0.0019	<LOQ	<LOQ
THCV	0.0021	4.81	0.48
CBN	0.0013	2.90	0.29
Δ9-THC	0.0020	686.56	68.66
Δ8-THC	0.0019	<LOQ	<LOQ
THC-A	0.0034	52.40	5.24
CBC	0.0024	15.52	1.55
Total THC		732.51	73.25
Total CBD		<LOQ	<LOQ
Total Cannabinoids		820.57	82.06

73.25%

Total THC

<LOQ

Total CBD

82.06%

Total Cannabinoids

68.66%

Δ9-THC

N/A

Percent Moisture

N/A

THC : CBD Ratio

Cannabinoids Methodology: High Performance Liquid Chromatography (HPLC) using PerkinElmer FLEXAR™ with Photo Diode Array Detector (PDA)

Total CBD and total THC are calculated values, to account for assumed decarboxylation from the acid form (THCA or CBDA) to the neutral form, causing weight loss of the acid group. These values are calculated as follows:
 Total THC = (THCA x 0.877) + Δ9-THC Total CBD = (CBDA x 0.877) + CBD
 Ratio of Total CBD: Total THC Reagent Blanks: < LOQs for all analytes

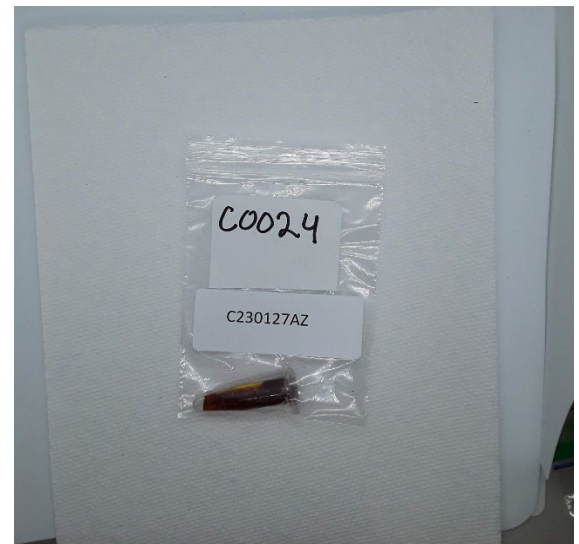
LOQ = The lowest quantity that this method can reliably detect. Any cannabinoid that was not detected is assumed to be less than the stated LOQ (<LOQ).

All results reflect dry weight of material, based on % moisture of the sample.

Measurement of Uncertainty (MU): the parameter, associated with the result of a measurement, that characterizes the dispersion of the values that could reasonably be attributed to the particular quantity subject to measurement.
 Δ9-THC MU = ±0.005% Total THC MU = ±0.007%

All other cannabinoid MU values are available upon request.

All moisture analysis is determined by loss-on-drying measurement using OHAUS Model MB90 Moisture Content Readers.



This report shall not be reproduced except in full without approval of the laboratory. This is to provide assurance that parts of a report are not taken out of context. Results apply to the samples as received.

Certified by: *Luke E.M*
 Luke Emerson Mason (Laboratory Director, Bia Diagnostics)